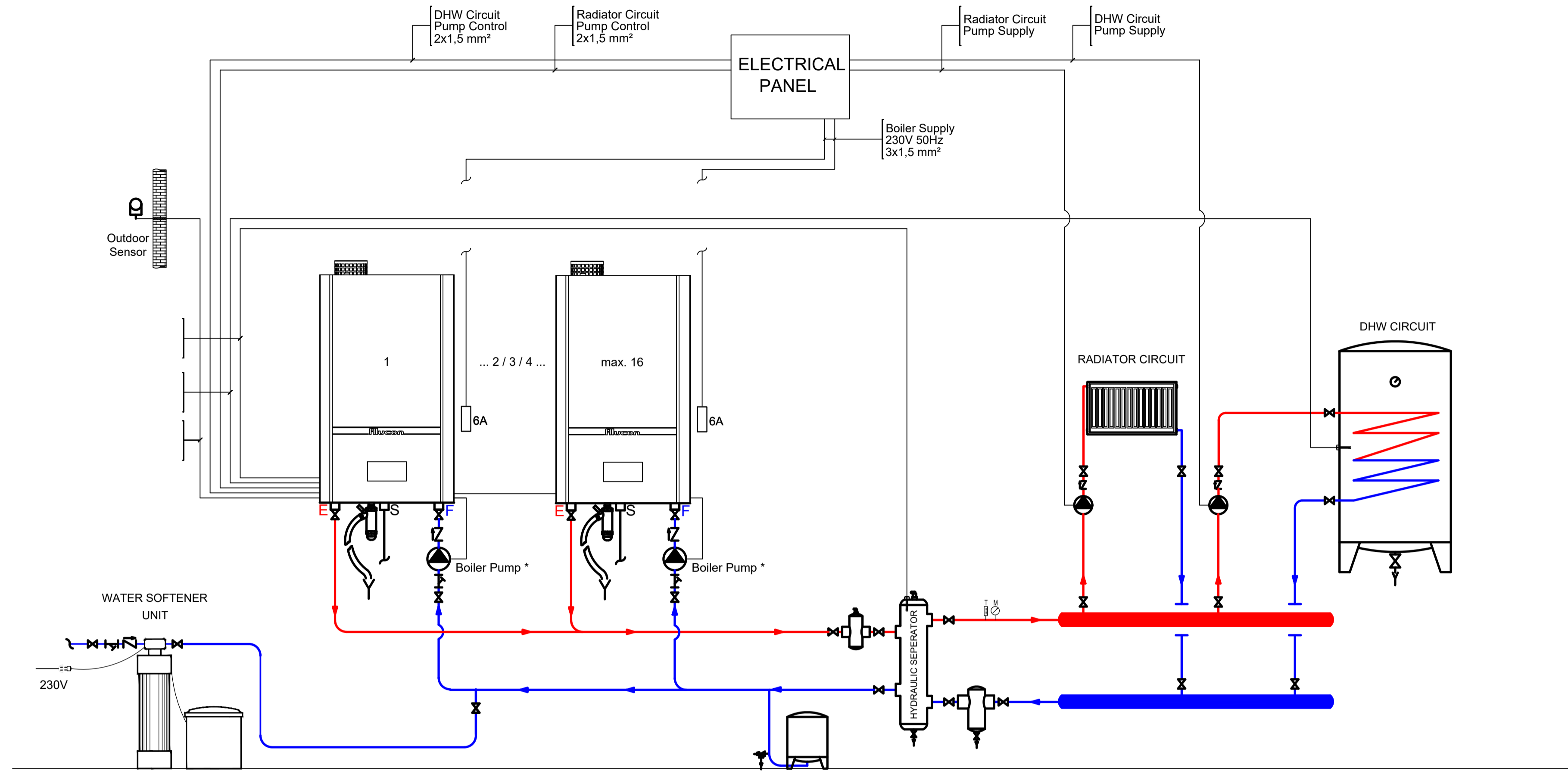


* DON NOT SCALE



SENSOR & MODULE LIST

- | | |
|--|--------|
| 1. Outdoor Sensor (QAC34) | 1 Pcs. |
| 2. Immersion Type Temperature Sensor (QAZ36) | 2 Pcs. |

E = Water Inlet Connection
F = Water Outlet Connection
S = Gas Inlet

NOTES :

- * In **Alucon** model boilers, the pump is shipped in the boiler packaging. It is mounted on the return line.
- * In **Wallcon X-treme** model boilers, the pump is inside the boiler.

PUMP	VALVE	NON-RETURN VALVE	STRAINER	TEMPERATURE SENSOR	OUTDOOR SENSOR	AIR RELIEF VALVE	THERMOMETER	MANOMETER	SAFETY VALVE	DRAIN	AIR SEPARATOR	DIRT SEPARATOR	EXPANSION VESSEL	3-WAY VALVE

Gassero
 technology for your comfort

GASSERO WALL HUNG TYPE CONDENSING BOILER PRINCIPLE DIAGRAM Wall Hung Cascade + Hydraulic Separator + Radiator Circuit + DHW Circuit

	ADI-SOYADI NAME-SURNAME	TARİH DATE	İMZA SIGN	RESİM NO DRAWING NR	WHT-2
ÇİZEN DRAWN BY	İ.SÜSLÜ	25.02.2021			
KONTROL CONTROL	E.UZA	25.02.2021			
ONAY APPROVAL	E.UZA	25.02.2021			
				TELİF HAKKI SAKLIDIR CONFIDENTIAL COPYRIGHT	
					A3